



Midlands Partnership University
NHS Foundation Trust



**Delivering high
quality services**

Our Trust

Midlands Partnership University NHS Foundation Trust (MPFT) was formed on 1 June 2018 following a merger between South Staffordshire and Shropshire Healthcare NHS Foundation Trust and Staffordshire and Stoke-on-Trent Partnership NHS Trust.

We are an integrated organisation that provides physical and mental health, learning disability and social care services.

As an organisation we serve a population of 1.7 million, over a core geography of 2,400 square miles, and employ around 8,500 members of staff.

To ensure that our services retain a local focus, they are organised into four care groups, each led by a Managing Director:

- Staffordshire and Stoke-on-Trent
- Shropshire and Telford & Wrekin
- Children and Families
- Specialist services

The majority of our services are delivered in Staffordshire, Stoke-on-Trent, Shropshire and Telford & Wrekin, but through Inclusion, part of our Specialist Care Group, we cover much of England.

Partnership working is vital for us to achieve maximum efficiency and we are proud of the relationships we hold across the wider health and care systems including within the third and voluntary sector, at local, regional and national level.





Trust Board Members

Directors



Neil Carr OBE
Chief Executive



Steve Grange
Director of Strategy
and Deputy CEO



Alex Brett
Chief People
Officer



Dr Abid Khan
Medical Director



Liz Lockett
Chief Nurse, Director
of Quality & Clinical
Performance



Chris Sands
Chief Financial
Officer



Jo Cowcher
Director of
Social Care



Chris Ibell
Chief Digital
Information Officer



Richard Morris
Director of Corporate
Affairs and
Communications



Mel Ball
Director of Lived
Experience

Care Group Managing Directors



Claire Bailey
Children and
Families



Jennie Collier
Staffordshire and
Stoke-on-Trent



Howard King
Specialist Services



Cathy Riley
Shropshire and
Telford & Wrekin

Non-Executive Directors



Jacqueline Small
Interim Chair



Jane Gaddum
Non-Executive Director
& Interim Vice Chair



Simmy Akhtar
Non-Executive
Director



Pauline Gibson
Non-Executive
Director



Mark Large
Non-Executive
Director



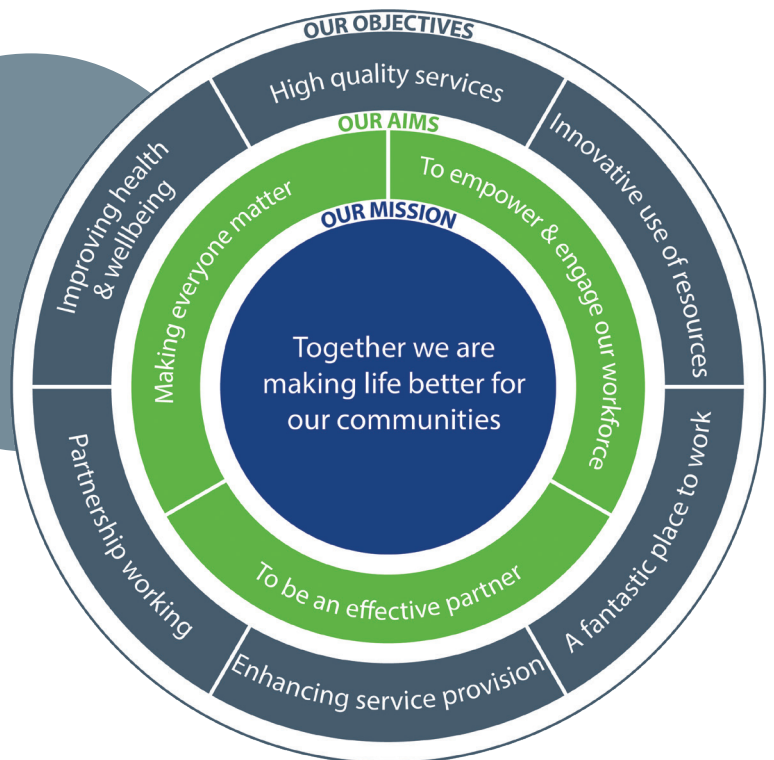
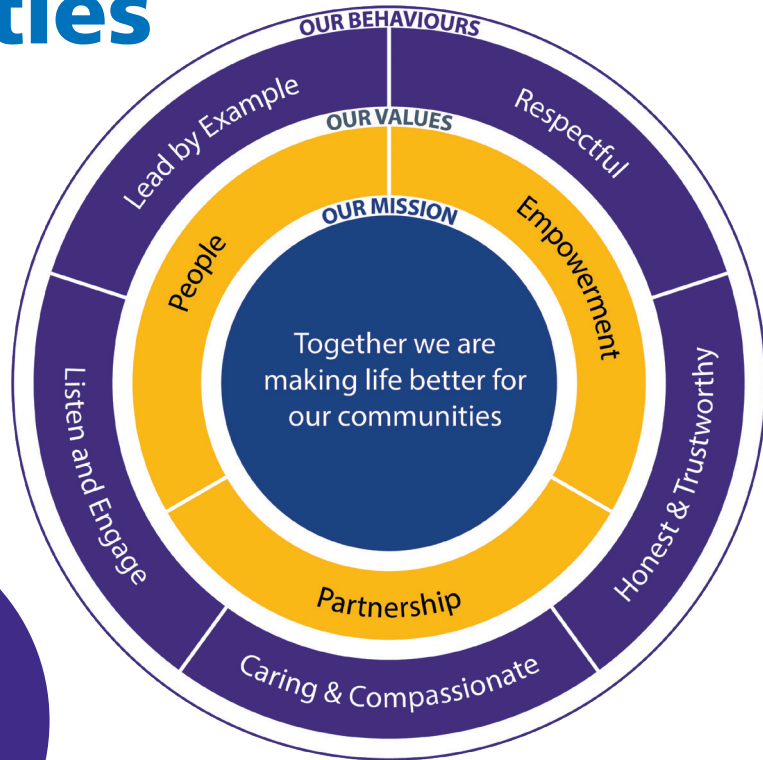
Debbie Nixon
Non-Executive
Director



Simon Pearce
Non-Executive
Director

Our overarching mission is to make life better for our communities

We have a clear set of values, behaviours, aims and objectives which help define our organisation's culture and guide our thinking and decision making.





Our services

Staffordshire and Stoke-on-Trent Care Group

Hospital Based

- Walk-in Centre (Haywood) / Minor Injuries Unit (Leek Moorlands)
- Intermediate Care and Rehab Inpatient wards and Care Home beds
- Specialist Rehab Medicine Ward / Outpatient Services
- Amputee Rehab & Limb Fitting
- Spasticity Management Service inc Botulinum and Intrathecal Baclofen
- Stroke Rehab Ward
- Community Stroke Team
- Rheumatology Day Care and outpatient services
- IMPACT Community Pain Team
- Specialist Physio and Occupational Therapy Services
- Musculoskeletal Interface Service
- Osteoporosis & Fracture Liaison Service

Physical Health

- Intermediate Care / Community Intervention Service
- Community Rapid Intervention Service (CRIS)
- Social Care - Assessment Case Management, Review and Safeguarding
- Hospital Social Care Assessment Support
- Hospital Discharge Teams
- Community Nursing
- Palliative Care
- Tissue Viability
- Occupational Therapy
- Physiotherapy / MSK
- Speech & Language Therapy
- Podiatry
- Specialist Pelvic Health
- Long Term Conditions; Heart Failure, Respiratory & Diabetes
- Specialist Falls
- Physical Health Psychology - Neuro-Psychology
- Dietetics
- Asylum Team
- Chronic Pain Management
- Falls Service

- Community Rehabilitation
- Intensive Support Team (Care Homes)
- Long Covid Clinics

Mental Health

- Talking Therapies (formerly IAPT)
- In-patients (adult acute, older adult, MOD, PICU)
- Mental Health Social Work
- Integrated Mental Health Neighbourhood teams
- Access and 24 hour helpline
- Dementia/Memory and older adults services
- Early Intervention in Psychosis
- Community Managed Libraries
- Crisis Resolution Home Treatment Teams
- Core 24 at Queens Hospital
- Liaison Psychiatry at County Hospital
- Discharge Team
- Hospital Avoidance Team
- Dementia Team in Prisons



Talking Therapies mobile therapy bus hits the road

The mobile facility, which is thought to have been the first of its kind in the UK, is provided by Staffordshire and Stoke-on-Trent Talking Therapies and offers a range of effective, evidence-based treatments for a wide range of common mental health problems.

It specialises in treating anxiety disorders such as post-traumatic stress, worry, obsessive compulsive disorder and health anxiety, and low mood (depression). Treatment is confidential and free and patients can self-refer without having to first visit their GP surgery.

Shropshire and Telford & Wrekin Care Group

- In-patients (adult acute, older adult, dementia)
- Health Based Place of Safety (all age)
- NHS IAPT/Talking Therapies (Telford and Shropshire)
- Dementia Service
- Community Mental Health Teams
- Early Intervention in Psychosis Team
- Intensive Life-Skills Team
- Mental Health Rehabilitation Team
- Rough Sleeper Team
- Crisis Resolution/Home Treatment Teams
- Liaison Mental Health Teams
- Maternal and family mental health service
- 24/7 Access service

Children and Young People

BeeU service comprising:

- ASD Assessment Team
- ADHD Assessment Team
- Learning Disability Team
- Intensive Support Team
- Crisis Resolution/Home Treatment Team
- Core Team
- Children's Eating Disorder Team
- School-based Mental Health Support Teams



Shropshire's Early Intervention in Psychosis (EIPS) team takes service users on a Voyage to Recovery

Voyage to Recovery saw six young people and members of the EIPS become the crew of a sailing boat, sailing the coast of Wales for six days and nights.

A form of adventure therapy, it helps people with mental health conditions by providing opportunities to experience themselves and others differently, away from their 'normal' environment, in which their problems are embedded and maintained.

Among the group was 25-year-old Laura Owen, from Telford, who has been supported by the service for almost two years. She said: *"It was absolutely unreal. Really amazing. None of us, including the staff, had ever done anything like this before. But we were all going into the same situation, and we were all in it together. Whatever needed to be done was done as a team. It was a nice little community where everyone helped each other out. I always struggle with trust, so it was a new experience for me, but you have to trust each other to get you through it."*



Children and Families Care Group

- 0-19 Family Health & Wellbeing Service (Staffordshire)
- Integrated Health Visiting and School Nursing (0-19) (Stoke-on-Trent)
- Targeted Intervention (School Nursing 5-19) (Stoke-On Trent)
- School Age Immunisation Service (Staffordshire and Stoke-on-Trent)
- Children's Dietetics (South Staffordshire)
- Children's Podiatry (South Staffordshire)
- Children's Physiotherapy (Staffordshire & Stoke-on-Trent)
- Children's Speech & Language Therapy (Staffordshire & Stoke-on-Trent)
- Children's Occupational Therapy (Staffordshire & Stoke-on-Trent)
- Children's Audiology (South Staffordshire)
- Community Paediatrics (South Staffordshire)
- Special School Nursing (Staffordshire)
- Children's Diabetes Nursing Team (North Staffordshire)
- Children's Epilepsy & Respiratory Nurse (North Staffordshire)
- Children's Community Nursing & Hospital at Home (Staffordshire & Stoke-on-Trent)

- Community Complex Care (Staffordshire & Stoke-on-Trent)
- Looked After Children's Nursing Service (South Staffordshire)

Perinatal Mental Health Services

- Perinatal Mental Health (South Staffordshire & Shropshire Community & Regional Inpatient Unit)
- Maternal Mental Health Service (Lotus) Staffordshire

Mental Health Services

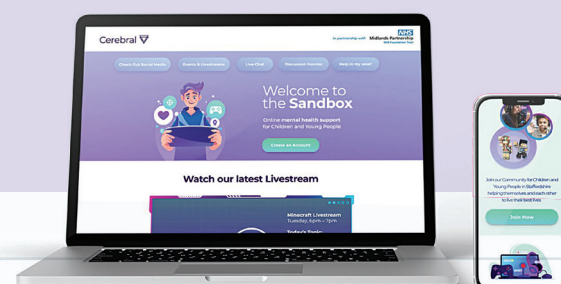
- CAMHS (South Staffordshire)
- CAMHS Early Years (South Staffordshire)
- CAMHS Intensive Support Team (South Staffordshire)
- CAMHS Learning Disabilities (South Staffordshire)
- CAMHS Eating Disorders (South Staffordshire)
- Mental Health Support Teams for Schools (East Staffordshire, Cannock, Stafford and Tamworth)
- Children and Young People Autism Services (South Staffordshire)

Award winning partnership offering digital mental health support to children and young people

MPFT were the first NHS trust to partner with Cerebral (now part of Mindler), which uses online technology to make therapy and web-based support more easily accessible to children, young people and families without the need for travel.

As well as gaming livestreams, live chat, and other engaging and fun digital content aimed at supporting children and young people's emotional health and wellbeing, those accessing the new service may also be offered personal online therapy if this is felt to be required.

Children and young people are intelligently matched with a therapist based on their preferences, for example: cultural or ethnic background; experience with trauma or abuse; or challenges commonly faced by the LGBTQIA+ community. This improves clinical outcomes by building a strong therapeutic alliance right from the start.



Specialist Services Care Group

Forensic Services

- In-patients: Security Team (Stafford and Shropshire); Medium Secure (Stafford); Low Secure (Stafford and Shropshire)
- Reach Out and Community Forensics (Stafford and Shropshire)
- Offender Personality Disorder Services (Stafford)
- Mental Health Treatment Requirement Pathway (Staffordshire, Telford)
- Offender Personality Disorder Pathway (Derbyshire, Leicestershire, West Mercia)
- Youth Offender Health (Staffordshire, Stoke-on-Trent)
- Liaison and Diversion – West Mercia and Staffordshire
- Forensic Intensive Recovery Support Team

Learning Disabilities

- Learning Disabilities (Community)
- Intensive Support Service
- Learning Disabilities Nursing
- Telford Autism Hub

Physical Health

- Dental (Staffordshire)
- Diabetic Retinopathy (Staffordshire and Shropshire) and 8 care processes pilot
- Youth Offending Service

Other Specialist

- Eating Disorders (Staffordshire, Shropshire) and lead West Midlands Eating Disorder Collaborative
- Physical and Adult Disability Team (Staffordshire)

Inclusion Services

Sexual Health

- Staffordshire, Stoke-on-Trent and Telford & Wrekin
- Shropshire
- Leicester, Leicestershire and Rutland

Community Drug and Alcohol Services

- One Recovery Buckinghamshire
- Inclusion Visions Thurrock
- Inclusion Isle of Wight
- Inclusion Recovery Hampshire
- Telford STaRS

- Portsmouth (Prescribing partner to the Society of Saint James)
- DWP Peer Mentorship Partnership (Hampshire, Southampton and Portsmouth)

Residential Detox Unit

- Dame Carol Detoxification Service (Hampshire)

Health in Justice Services

- West Yorkshire Prisons
- East Midlands Prisons
- West Midlands Prisons
- Thames Valley Prisons
- Isle of Wight Prisons

Community Wellbeing and Psychological Services

- Inclusion Thurrock IAPT
- Inclusion Thurrock Psychological Therapies
- Inclusion Thurrock Recovery College
- Individual Placement Service (IPS - a return to work employment service)

Reducing Gambling Harms Clinic

- West Midlands
- East of England

Launch of new Health and Justice Service

The Health and Justice Service will provide additional support to people with mental health concerns, learning disabilities, substance misuse problems or other vulnerabilities. It will support individuals at each point of the criminal justice process and brings together the following services in a partnership being delivered by MPFT and North Staffordshire Combined Healthcare NHS Trust (NSCHT):

- Liaison & Diversion – assesses vulnerable individuals being brought into the criminal justice system.
- Mental Health Treatment Requirements (MHTR) – a sentencing option for people who have common mental health difficulties.
- RECONNECT – seeks to improve the continuity of care of vulnerable people leaving prison.



University Trust status

We are proud to be a research-led organisation and are at the forefront of innovating and implementing evidence based treatments and models of care which improve outcomes.

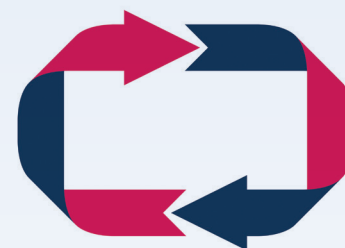
In April 2023 we achieved University Trust status, granted by Keele University.

Our new status is a continuation of our long-term programme to enhance research partnerships to drive innovation and will help us develop new practices and treatments more quickly, as well as supporting investment to strengthen the future workforce.

We offer service users, carers and staff the opportunity to take part in a range of research projects as well as the evaluation of services.



iSWITCHED Project - Improving the management of people with severe mental illness



People experiencing severe mental illness have a reduced life expectancy of 15-20 years compared to the general population.

60% of deaths within this population are due to potentially preventable physical health conditions. Some of these preventable conditions can be attributed to side-effects from antipsychotic medications. Switching medications to ones that do not cause such side-effects may be possible. However, up until now this has not been researched.

Professor Saeed Farooq (Consultant Psychiatrist) is leading a research study called iSWITCHED. This research aims to develop and test a new intervention that will enable clinicians to apply evidence-based guidance on reviewing and switching antipsychotic medication, for patients with severe mental illness.

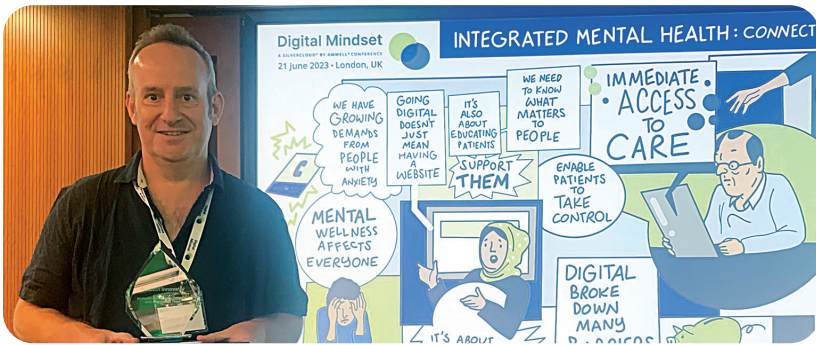
The intervention will be person-centred to ensure the patient remains at the heart of the treatment decision. Research has been supported and informed by service users and caregivers throughout.

Awards



MPFT is an award winning Trust. Individuals, teams and services across the organisation are continually recognised through various awards, including:

The Community Mental Health Triage team were awarded the Staffordshire Police commendation



Specialist services won 'Product Innovator Award' for their work in developing online treatment options for substance misuse, gambling harms and eating disorders at the SilverCloud conference. Howard King (above) with the award.

Simon Fraher, Mental Health Nurse Practitioner and Physical Health Lead in Shropshire and Telford & Wrekin was shortlisted for The Nursing Times 'Learner of the year' Award.

Children and Young Peoples Mental Health support teams were finalists in the 'Digitising Patient Care' HSJ Award for the launch of Sandbox.



Children and Young Peoples Mental Health Services in South Staffordshire won the 'Reducing Health Inequalities through Digital' HSJ Digital Award. The award recognises the successful collaboration between MPFT teams and Sandbox digital mental health platform.



Staff engagement and development

We are committed to being a fantastic place to work for everyone and have strong staff engagement initiatives within the Trust including recognition schemes, awards, staff networks, an ideas sharing hub and wellbeing resources.

NHS Staff Survey

We know our people are our biggest asset and we very much value their opinions.

We were delighted to achieve above average in all areas of the NHS People Promise in the 2022 Staff Survey. Over 5,000 of our staff completed the survey, and it was reassuring to see the feedback, including:

- Respondents overwhelmingly feel we are an organisation that respects individual differences.
- Three quarters feel safe to speak up about concerns so that services can be improved.
- The majority agreed that they are supported to develop their potential.
- Nearly all feel their work is valued by their manager.

Because of our results, we were named the best mental health trust to work for in the Midlands region by the HSJ.



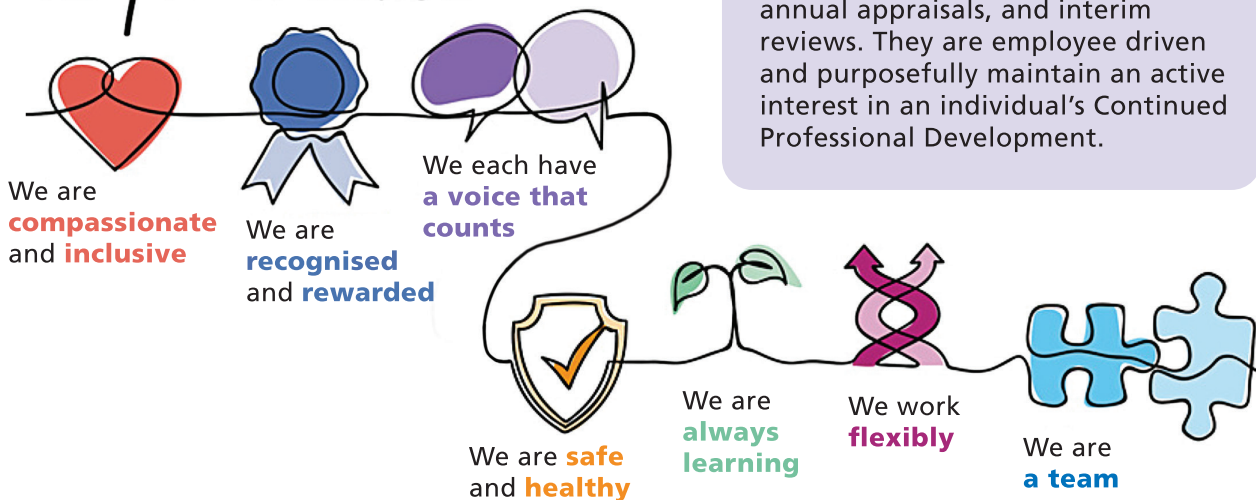
Social Work Learning Academy (SWLA)

The SWLA provides all levels of social work staff a dedicated centre of excellence. Any social care staff joining our organisation is automatically enrolled into the academy.

Employee development is a continuous process and membership of the SWLA is a lifetime one.

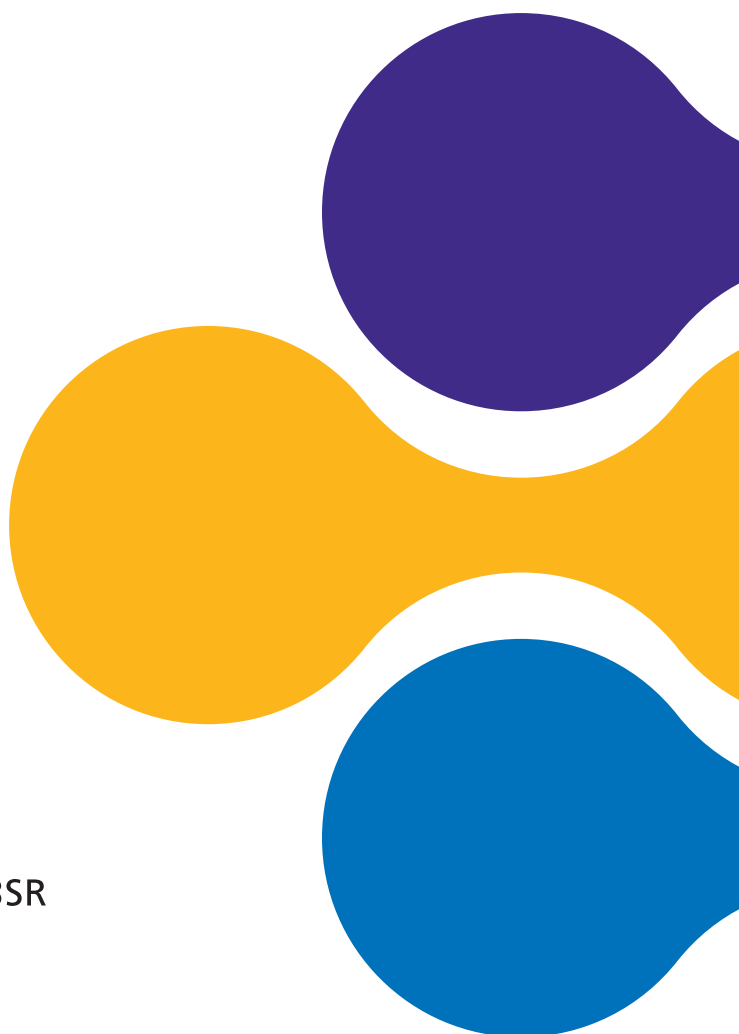
Members of the SWLA have access to regular 'My Time Meetings' led by our Principal Social Workers, which dovetail and complement existing organisation supervision, annual appraisals, and interim reviews. They are employee driven and purposefully maintain an active interest in an individual's Continued Professional Development.

People Promise





Midlands Partnership University
NHS Foundation Trust



Contact us

enquiries@mpft.nhs.uk

Trust Headquarters, Mellor House
Corporation Street, Stafford ST16 3SR

www.mpft.nhs.uk